

Land Cruiser UZJ100 Rear Bumper Installation Instructions

Fits 1998-2004 100 Series Land Cruiser and Lexus LX470



Thank you for purchasing a Slee Off-Road Rear Bumper for your Land Cruiser. All attempts have been made to supply the bumper in perfect condition with complete installation hardware. However should you have any problems with the condition of the bumper or find any parts missing, please do not hesitate to contact us at **1888 4X4 SLEE** or sales@sleeffroad.com

Your bumper is guaranteed free of defect in material and workmanship for a period of one year from date of purchase. Should you experience any problems with your bumper, please contact us directly to resolve any issues.

We have attempted to provide complete installation instructions provided below. However from time to time changes might be made to the bumper and you might notice small inconsistencies with the instructions. Please notify us of such occurrences so we can correct them.

Parts Included

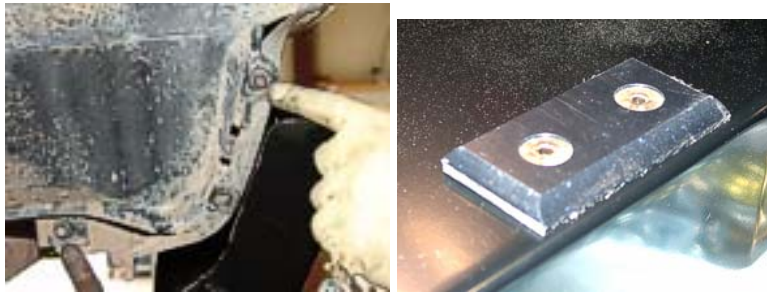
Qty	Part Description	Qty	Part Description
1	Driver side Frame Bracket	2	8-32" x 1/2" Machine Screws *
1	Passenger Side Frame Bracket	2	8-32" Lock Nuts *
1	U Latch *	2	8-32" Flat Washers *
1	Latch Hook *	6	5/16" x 1/2" Bolts *
1	Stainless Steel Locking Pin *	7	5/16" Split Washer
2	Spindle Bearings *	2	1/4" x 1/2" Machine Screw *
1	Hubcap *	2	1/4" Flat Washer *
1	Hub Seal *	3	3/8" x 1 1/2" Bolts *
1	Spindle Castle Nut *	1	5/16" Nut *
1	Spindle Flat Washer *	1	5/16" Flat Washer *
1	Cotter Pin *	11	3/8" Flat Washers *
3	Lug Nuts *	4	3/8" Lock Nuts *
4	Wire Clips *	1	3/8" Barrel Nut *
2	Nylon Pad *	4	3/8" Split Washer *
1	Rubber Bump Stop *	3	3/8" Nuts *
10	Zip Ties *	4	Countersunk Stainless 3/8" Machine Screws *
1	Hella License Plate Light *	4	1/2" x 2" Bolts – Grade 5
1	Connection Harness *	4	1/2" Split Washers – Grade 5
1	Hi-Lift Clamp *	8	1/2" Flat Washers – Grade 5
1	5008 Light Bulb *	4	1/2" Nuts – Grade 5
1	Tire Mount *	2	1/2" x 1.5" bolts – Grade 8
1	Slide Plate with rivets *	4	1/2" Split Washers – Grade 8
		2	1/2" Nuts – Grade 8
		2	1/2" Flat Washer – Large – Grade 8

* These parts are not supplied when ordered without tire carrier

Qty	Part Description – 1998 Vehicles only	Qty	Part Description – +1999 Vehicles
4	14mm x 40mm Bolts	8	14mm x 40mm Bolts
4	14mm Flat Washer – Large	8	14mm Flat Washer – Large
6	12mm x 40mm Bolts	2	12mm x 40mm Bolts
6	12mm x Split Washers	2	12mm x Split Washers
4	12mm x Flat Washers – Large		

**Step 1.**

Remove rear mud flaps. Remove rear bumper. Remove all brackets and bolts from rear cross member. Also remove tow hitch if so fitted.

**Step 2.**

On the driver side reinstall the bolts that attaches the rubber splash guard to the body.

Step 3.

Install the two nylon latch plate using two 3/8"x 3/4" counter sunk stainless steel screws with flat washers and lock nut.

**Step 3.**

Slide the bumper over the rear cross member with the fronts of the wings pointing downwards. Gradually lift the front wings as the bumper is being slid forward. Be careful to not hit the vehicle body with the wings or the back end of the bumper.

**Step 4.**

Once bumper is located, install the four 14mm x 40mm bolts, split and flat washers through bottom brackets into the captive nuts in the frame rail. Run bolts in, but do not tighten.

**Step 5.**

Attach side brackets to the frame rail using two 14mm x 40mm bolts, split washers and flat washers. Do not tighten bolts. Just leave finger tight. (1998/1999 years might be 12mm bolts.)

**Step 6.**

Attach the bumper wings to the side brackets using the 1/2" x 2" bolts.

**Step 7.**

Using a shallow socket and extension, install the two rearmost 12mm bolts with lock and flat washers.

Step 8.

Torque bolts to spec in following order:

Rearmost bottom 14mm bolts – 118 lbs.ft

Front frame bracket 14mm bolts – 118lbs.ft

Rearmost 12mm bolts above receiver – 100 lbs.ft

Check the alignment of the wings with the body lines and adjust up or down if needed. Torque the 1/2" bolts that secure the wings to brackets to 100 lbs.ft

Assembling the tire carrier

**Step 1.**

Pack the two supplied taper bearings with waterproof grease. Install the bigger of the two taper bearings in the bottom of the hub on the tire carrier. Next install the seal as shown in photograph. Tap the seal into position with a hammer. Pack the cavity in the hub full of grease, but leave the center open for spindle to go through.

**Step 2.**

Install the latch on the tire carrier arm. Use 4 5/16" x 3/4" bolts and split washers installed into pre-tapped holes. Torque to 15 ft lbs.



Tire Carrier latch and bolts.



Step 3.

Install the rubber bump stop on the tab welded to the bottom of the swing arm. Use the supplied 5/16" lock nut and flat washer.



Step 4.

Install the locking pin in the sleeve on the hub side of the tire carrier. Use a small amount of dry lubricant on the pin. Ensure that the pin slides freely in the sleeve.

To prevent the pin from corroding and getting stuck, it should be removed, cleaned and lubed on a regular basis.



Tire Carrier installed on bumper.

Step 5.

Slide the tire carrier onto the spindle and insert the 2nd taper bearing from the top. Install the flat washer and castle nut. Tighten castle nut and test the swing of the tire carrier. The swing-out be fairly tight, but not bind. Install cotter pin to lock castle nut in place. Pack the top of the hub with grease. Install the hub cap by screwing it into the hub.



Step 6.

Install the spare tire carrier plate to the tire carrier using the supplied 3/8" x 1-1/2" bolts. To set the depth of the carrier, use a straight edge and place it across the back of the spare tire. Measure the distance from the straight edge to the mounting surface of the wheel. Subtract 1/4" from this and use this measurement to set the face of the mounting plate.

Step 7.

Install spare tire using the supplied lug nuts.

Step 8.

With the spare tire installed, adjust the latch by tightening up the U bolt.



**Step 9.**

Install your license plate light on the tire carrier using the two 8/32" machine screws, washers and nuts.

**Step 9.**

Run this harness along the back of the tire carrier. Use the zip ties to secure the harness and/or the supplied screws and clips. The screws require drilling holes into the tire carrier arm.

Step 10.

Feed the harness through the slot between the bumper and the body. Route the harness over the frame (stay clear of the exhaust) and locate a suitable tail light source. Tap the red wire into the suitable source and the black wire to ground.

Test the license plate lights to make sure they are connected properly.

Step 11.

Install the license plate on the tire carrier using the two 5/16" machine screws. The holes are tapped on the tire carrier face underneath the license plate light.

Step 12.

Close the tire carrier and close the latch. The tension on the latch is adjustable by tightening the 1/2" nuts to shorten the U bolt of the latch.

--	--

You have now successfully installed your bumper. Here are a couple of notes in using the bumper.

1. Do not let go of the tire carrier when you open it. The pin and safety stop should stop the tire carrier from swinging open to far, but you could damage the pin and/or the safety stop.
3. Clean, inspect and re-lube the pins bi-annually to ensure smooth operation.
4. Do a yearly inspection of the bearings by removing the cap and checking the condition of the grease in the hub. If you see rust or moisture, remove the carrier from the bumper. Remove the seal (replacements can be purchases from Slee Off-Road), clean and repack the bearings and re-install the seal. Re-install the tire carrier on the bumper.