

## Land Cruiser UZJ100 Rear Bumper Installation Instructions

Fits 1998-2007 100 Series Land Cruiser and Lexus LX470



Thank you for purchasing a SLEE Off-Road Rear Bumper for your Land Cruiser. All attempts have been made to supply the bumper in perfect condition with complete installation hardware. However should you have any problems with the condition of the bumper or find any parts missing, please do not hesitate to contact us at **1888 4X4 SLEE** or [sales@sleeoffroad.com](mailto:sales@sleeoffroad.com)

**Your bumper is guaranteed free of defect in material and workmanship for a period of one year from date of purchase. Should you experience any problems with your bumper, please contact us directly to resolve any issues.**

We have attempted to provide complete installation instructions provided below. However from time to time changes might be made to the bumper and you might notice small inconsistencies with the instructions. Please notify us of such occurrences so we can correct them.

**Bumper Parts List**

Qty	Part Description	Qty	Part Description
1	Bumper Channel	4	1/2" x 2" Bolts – Grade 8
1	Passenger Side Frame Bracket	4	1/2" Split Washers – Grade 8
1	Driver side Frame Bracket	8	1/2" Flat Washers – Grade 8
8	14mm x 40mm Bolts	4	1/2" Nuts – Grade 8
8	14mm Flat Washer – Large	2	1/2" x 1.5" bolts – Grade 8
6	12mm x 40mm Bolts	4	1/2" Split Washers – Grade 8
6	12mm x Split Washers	2	1/2" Nuts – Grade 8
4	12mm x Flat Washers – Large	2	1/2" Flat Washer – Large – Grade 8
2	Shims		

**Tire Carrier Parts List**

Qty	Part Description	Qty	Part Description
1	Tire Carrier Frame	2	8-32" x 1/2" Machine Screws
1	U Latch	2	8-32" Lock Nuts
1	Latch Hook	2	8-32" Flat Washers
1	Stainless Steel Locking Pin (Pre-installed)	6	5/16" x 1/2" Bolts
2	Spindle Bearings (1 x Large – 1 x Small)	7	5/16" Split Washer
1	Aluminum Hubcap	2	1/4" x 1/2" Machine Screw (License Plate)
1	Hub Seal	2	1/4" Flat Washer
1	Spindle Castle Nut	3	3/8" x 1 1/2" Bolts
1	Spindle Flat Washer	1	5/16" Nut
1	Cotter Pin	1	5/16" Flat Washer
3	Lug Nuts	11	3/8" Flat Washers
2	Wire Clips & Self Tapping Screws	4	3/8" Lock Nuts
2	Nylon Pads	1	3/8" Barrel Nut
1	Rubber Bump Stop	4	3/8" Split Washer
10	Zip Ties	3	3/8" Nuts
1	Hella License Plate Light	4	Countersunk Stainless 3/8" Machine Screws
1	Connection Harness		
1	Hi-Lift Clamp		
1	5008 Light Bulb		
1	Tire Mount		
1	Slide Plate with rivets (Small)		

**Ladder Carrier Parts List**

Qty	Part Description	Qty	Part Description
1	Ladder Carrier	6	5/16" x 1/2" Bolts
1	U Latch	7	5/16" Split Washer
1	Latch Hook	1	5/16" Nut
1	Stainless Steel Locking Pin (Pre-Installed)	1	5/16" Flat Washer
2	Spindle Bearings	2	3/8" Split Washer
1	Hubcap	2	3/8" Nuts
1	Hub Seal	2	Countersunk Stainless 3/8" Allen head Bolts
1	Spindle Castle Nut		
1	Spindle Flat Washer		
1	Cotter Pin		
1	Nylon Pads		
1	Rubber Bump Stop		
1	Slide Plate with rivets (Large)		

**IF YOU PURCHASED A TIRE CARRIER OR LADDER CARRIER DO THE FOLLOWING STEPS BEFORE INSTALLING THE BUMPER ON THE VEHICLE.**



**Step 1.**

install the three nylon latch plates using two 3/8"x 3/4" counter sunk stainless allen head steel screws with flat washers and lock nut. The beveled edge goes towards the rear of the vehicle.

For the tire carrier, there are two pads and they are installed in the right most positions. The ladder carrier have one pad and installed in the left most position.



**Step 2.**

Install the stainless steel slide plates next to the spindles. The plates are installed using the supplied rivets. The rivets are tapped in with a hammer and will seat themselves when pounded in.

Start by gently tapping it into the hole and once the rivet is aligned properly tap it in, until seated.

The large slider plate is on the left side, and the smaller one on the right side.

**Step 4.**

If the spindles are covered with protective sleeves, unscrew them from the spindles.

## INSTALLING THE BUMPER CHANNEL

**Step 1.**

Remove rear mud flaps. Remove rear bumper. Remove all brackets and bolts from rear cross member. Also remove tow hitch if so fitted.

**Step 2.**

On the driver side reinstall the bolts that attaches the rubber splash guard to the body.

**Step 3.**

Slide the bumper over the rear cross member with the fronts of the wings pointing downwards. Gradually lift the front wings as the bumper is being slid forward. Be careful to not hit the vehicle body with the wings or the back end of the bumper.

**Step 4.**

Once bumper is located, install the four 14mm x 40mm bolts, split and flat washers through bottom brackets into the captive nuts in the frame rail. Run bolts in, but do not tighten.

Install the 1/2" x 1.5" bolts through the side holes of the bumper (indicated by the yellow arrow). Use flat washers, lock washer and 1/2" nut.

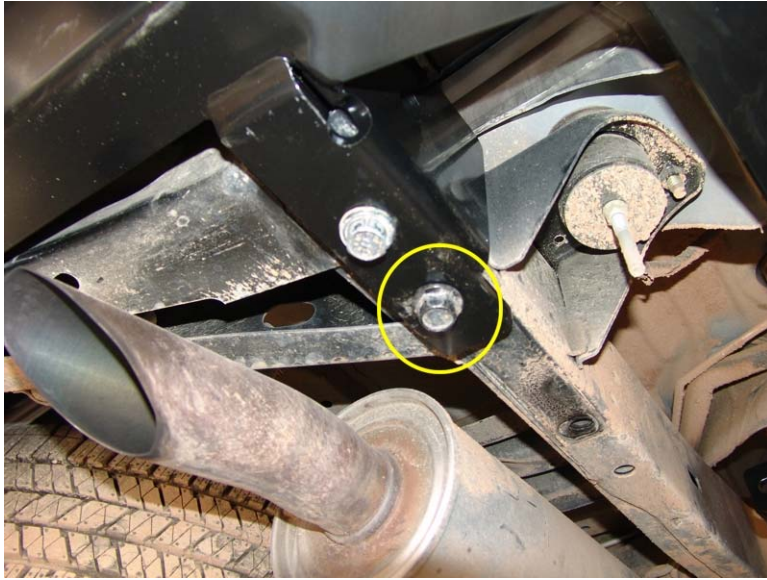
**Step 5.**

Attach side brackets to the frame rail using two 14mm x 40mm bolts, split washers and flat washers. Do not tighten bolts. Just leave finger tight. (1998/1999 years might be 12mm bolts.)

**Step 6.**

Attach the bumper wings to the side brackets using the 1/2" x 2" bolts.

Check the alignment of the wings with the body lines and adjust up or down if needed. Use the supplied shims and install them between the bumper bracket (Step 4) and the frame. Install the shim between the bracket and vehicle frame.

**Step 7.**

Tighten all the bolts on the bottom of the bumper. Inspect the alignment of the bumper wing with reference to the body. If the wing is tilted up in the front, use one of the supplied shims to level the bumper.

Loosen the bolts and then install the shim between the frame and bumper bracket at the indicated position (photo on right) on the side of where the wing is tilted up. Tighten the bolts and inspect. Repeat if necessary on other side.

Tighten side bolt as installed in step 4 – (not shown in photograph).

**Step 8.**

Using a shallow socket and extension, install the two rearmost 12mm bolts with lock and flat washers.

**Step 9.**

Torque bolts to spec in following order:

Rearmost bottom 14mm bolts – 118 lbs.ft

Front frame bracket 14mm bolts – 118lbs.ft

Rearmost 12mm bolts above receiver – 100 lbs.ft

Torque the 1/2" bolts that secure the wings to brackets to 100 lbs.ft

## INSTALLING THE TIRE CARRIER



### Step 1.

Pack the two supplied taper bearings with waterproof grease. Install the bigger of the two taper bearings in the bottom of the hub on the tire carrier. Next install the seal as shown in photograph. Tap the seal into position with a hammer. Pack the cavity in the hub full of grease, but leave the center open for spindle to go through.

Once the carrier is installed the installed zirk fitting can be used to grease the hub and bearings.



### Step 2.

Install the latch on the tire carrier arm. Use 4 5/16" x 3/4" bolts and split washers installed into pre-tapped holes. Torque to 15 ft lbs.

If the bolts don't thread easily, use a 5/16"-18 tap to clean out any powder coating in the threads.



Tire Carrier latch and bolts.

**Step 3.**

Install the rubber bump stop on the tab welded to the bottom of the swing arm. Use the supplied 5/16" lock nut and flat washer.

**Step 4.**

**The pin will be pre-installed on the tire carrier.**

These photos shows the pin assembly. From time to time, use a small amount of dry lubricant on the pin. Ensure that the pin slides freely in the sleeve.

To prevent the pin from corroding and getting stuck, it should be removed, cleaned and lubed on a regular basis.

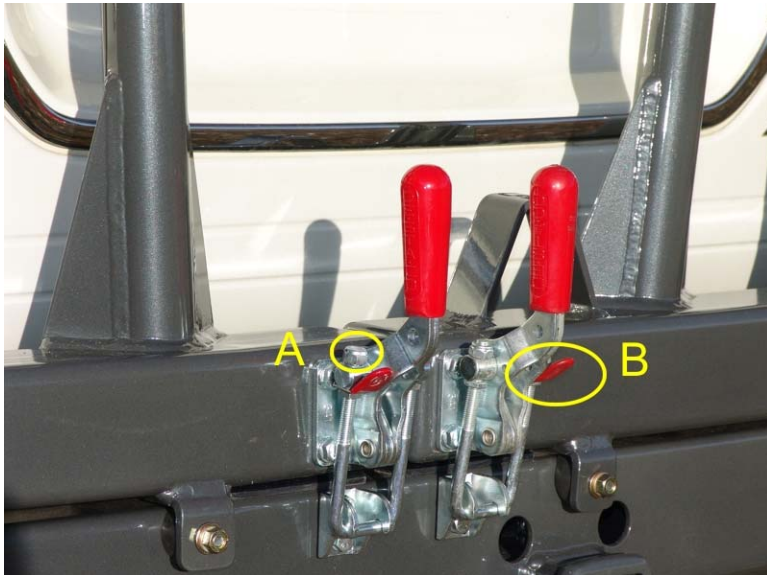


**Tire Carrier installed on bumper.**

**Step 5.**

Slide the tire carrier onto the spindle and insert the 2nd taper bearing from the top. Install the flat washer and castle nut. Tighten castle nut and test the swing of the tire carrier. The swing-out be fairly tight, but not bind. Install cotter pin to lock castle nut in place. Pack the top of the hub with grease.

Install the hub cap by screwing it into the hub.

**Step 6.**

Install the spare tire carrier plate to the tire carrier using the supplied 3/8" x 1-1/2" bolts. To set the depth of the carrier, use a straight edge and place it across the back of the spare tire. Measure the distance from the straight edge to the mounting surface of the wheel. Subtract 1/4" from this and use this measurement to set the face of the mounting plate.

**Step 7.**

Install spare tire using the supplied lug nuts.

**Step 8.**

With the spare tire installed, adjust the latch by tightening up the U bolt. Release the lock nut and then tighten the top nut (A in the bottom picture on the right)

**Hint :-** The little red tab as show in B on the picture below can be used to position the U portion of the latch under the latch bracket when closing the bumper.

**Use a thumb or forefinger to push down on the tab. This will move the U section of the latch forward and enable you to slide that under the latch bracket on the bumper. Then push the red handle forward to latch the bumper.**

**This keeps your fingers away from the latch mechanism and avoid potential injuries.**

**Step 9.**

Install LED License plate on bracket on tire carrier. Use the supplied hardware to secure the light to the tire carrier bracket. Route the harness through the hole in the bracket.

**Step 9.**

Run this harness along the back of the tire carrier Use the zip ties to secure the harness and/or the supplied screws and clips. The screws require drilling holes into the tire carrier arm.

**Step 10.**

Feed the harness through the slot between the bumper and the body. Route the harness over the frame (stay clear of the exhaust) and locate a suitable tail light source.

Tap the **brown wire** into the suitable **+12v** source and the **blue** wire to **ground**.

Test the license plate lights to make sure it is connected properly.



### Mounting a hi-lift jack to the bumper

Most Hi-lift jacks should fit, however if the base does not slide into the bracket on the bumper, it might be required to grind down the Hi-Lift.



The jack is installed with the round handle against the tire carrier tube and the bar with the holes towards the outside of the vehicle. The 3/8" stud DOES NOT line up with a hole in the bar. It goes between the handle and the bar. Use the supplied 3/8" barrel nut to secure the bracket over the handle and bar to keep it in position.

The base and bracket on the bumper can be drilled to accept a lock.

### Step 11.

Install the license plate on the tire carrier using the two 1/4" machine screws. The holes are tapped on the tire carrier face underneath the license plate light.

### Step 12.

Close the tire carrier and close the latch. The tension on the latch is adjustable by tightening the 1/2" nuts to shorten the U bolt of the latch.

## INSTALLING THE LADDER CARRIER

The installation of the ladder carrier is the same as for the tire carrier, except that there is no license plate light or license plate on the carrier.

You have now successfully installed your bumper. Here are a couple of notes in using the bumper.

1. Do not let go of the tire carrier when you open it. The pin and safety stop should stop the tire carrier from swinging open to far, but you could damage the pin and/or the safety stop.
3. Clean, inspect and re-lube the pins bi-annually to ensure smooth operation.
4. Do a yearly inspection of the bearings by removing the cap and checking the condition of the grease in the hub. If you see rust or moisture, remove the carrier from the bumper. Remove the seal (replacements can be purchases from Slee Off-Road), clean and repack the bearings and re-install the seal. Re-install the tire carrier on the bumper.