

**PRELIMINARY**

**100 Series Land Cruiser Skid Plate System**



Thank you for purchasing a Slee Off-Road Skid Plate for your Land Cruiser. All attempts have been made to supply the parts in perfect condition with complete installation hardware. However should you have any problems with the condition of the skid plate or find any parts missing, please do not hesitate to contact us at **1888 4X4 SLEE** or [sales@sleeoffroad.com](mailto:sales@sleeoffroad.com)

We have attempted to provide complete installation instructions provided below. However from time to time changes might be made to the rack and you might notice small inconsistencies with the instructions. Please notify us of such occurrences so we can correct them.

**Parts Included – BELLY PLATE**

<b>Qty</b>	<b>Part Description</b>
1	Belly Plate
	<b>Fit kit consisting of'</b>
3	M10 x 1.5 River Nuts
3	M10 x 1.5 x 30mm Bolts
10	M10 Thick flat washers
8	M10 x 1.25 x 30mm Bolts

## BELLY PLATE



### Step 1.

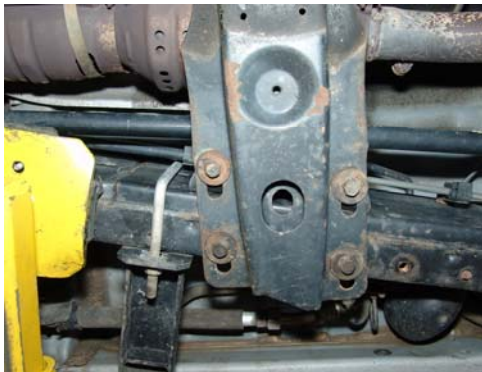
Park vehicle on flat surface and make sure that vehicle can not move.

Remove stock front metal skid plate and intermediate plastic skid plate.

Use a floor jack or transmission jack and position it under the transmission pan. Use a piece of wood between the jack and the transmission pan to prevent damage. It is not necessary to jack the transmission up, just support it so that it can not lower when the cross member is removed.

### Step 2.

Remove the two nuts in the center of the cross member that attaches the transmission mount to the cross member. Do not discard, these nuts will be used again.



### Step 3.

Now remove the 4 bolts on each side of the cross member. These are the bolts that attach the cross member to the frame. Do not discard, these bolts will be re-used.

If the vehicle has a vibration dampener installed on the PS frame behind the cross member this has to be removed as well.

**Step 4.**

Position the belly plate under the vehicle with the flange facing forward. The spacer block goes towards the top. This spacer block will line up with the transmission mount.

Raise the belly pan and install three of the original cross member bolts preside. Also make sure transmission mount studs are located in the holes and the nuts can be installed. Tighten all the bolts until snug..

**Step 5.**

The belly plate also attaches to the frame in 4 additional spots. Three of the 4 holes need to be drilled and rivet nuts (nutserts) need to be installed. The kit is supplied with 10mmx 1.5 rivet nuts.

A special tool is required to install these nuts. If you do not have one, it can be purchased from any industrial supply house or from Slee Off-Road directly.

Using a punch or any suitable marker, mark the locations for the holes to be drilled. Mark the center of the slot on the frame. The rear most hole on the driver side and two holes on the passenger side need to be marked.

**NOTE:** On certain model trucks you will only be required to drill two holes. The existing holes in the frame use M10 x 1.25 bolt (fine thread). Use the supplied bolts to attach the skidplate. Do not mistake the M10 fine thread with the M10 course thread bolts that ar supplied for the rivet nuts.

**Step 6.**

Remove the belly plate and drill the holes to install the rivet nuts. The supplied rivet nuts require a ½” drill.

Once the holes are drilled install the supplied rivet nuts. A special tool is required to install the rivet nuts. This can be purchased from Slee Off-Road or an industrial supply house. The rivet nut spec is M10 x 1.5 thread pitch.

**Step 7.**

Once the rivet nuts are installed, the belly plate can be re-installed and all bolts tightened.

Re-use the existing nuts for the transfer case mount and cross member bolts. For other locations use the supplied hardware.

Additional 10mm x 1.25 x 30mm bolts and washers are supplied in case any of the cross member bolts are not re-usable.

The torque specs are:

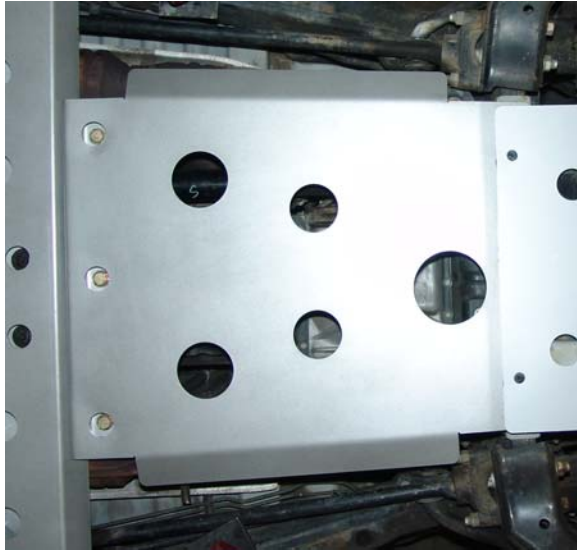
**Cross member bolts**  
54 lb.ft.

**Transmission Mount Bolts**  
37 lb.ft.

**Frame Mount Bolts**  
37 lb.ft

## INTERMEDIATE GUARD (requires Belly Pan)

Qty	Part Description
1	Intermediate Plate
	<b>Fit kit consisting of"</b>
3	7/16" x 1.5" Bolts – Grade 8
3	7/16" Nuts – Grade 8
6	7/16" Flat Washers – Grade 8



### Step 1.

**NOTE:** The intermediate plate covers the transmission pan. If you did not purchase the front skid plate, you would have to trim the stock factory skid plate to match. You would also re-use your existing bolts to attach the intermediate plate to the differential drop cross member.

Attach the rear of the intermediate plate to the lip on the front of the belly pan. Use the 7/16" bolts supplied.

The rear of the intermediate plate is the end with the folded back lip with three holes. The skid plate is installed such that the bottom is flush with the bottom of the belly plate.

Support the front of the intermediate plate until the front skid plate is installed.

## FRONT SKID PLATE

Qty	Part Description
1	Front Skid Plate
	<b>Fit kit consisting of"</b>
2	M8x1.25x15 Socket Head Counter Sink Bolts
10	M8x1.25x30mm Flange Head Bolts
12	8MM Tick Flat Washers



**A- Front Three bolts**

### Step 1.

Remove factory Support skid plate under vehicle and line up front bolt holes. Use M8 bolts with large thick flat washers and install bolts loosely

A – 3 bolts on front leading edge

B – 1 bolts each on front L shaped leg.

C – 2 bolts on each of the short L shaped legs.

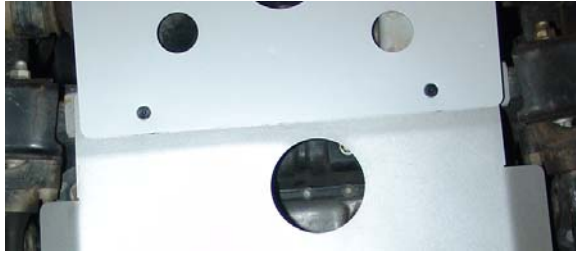
D- 1 bolt in center hole (recessed in hole)

It might be necessary to pry the L shaped legs to get all the bolts started.



B – L shaped Legs.

C – Recessed hole for Center Bolt.

**Step 2.**

Install the two M8 counter sink bolts on the rear of the skid plate where the plate overlaps the intermediate plate and the diff drop cross member.

Use two of the thick flat washers as spacers between the intermediate plate and the diff drop cross member.

**Step 3.**

Torque all Bolts.

**M8 Bolts**

15 ft.lb.

**M8 Socket Head Counter Sink**

12 ft.lb.

**7/16" Bolts**

30ft.lb